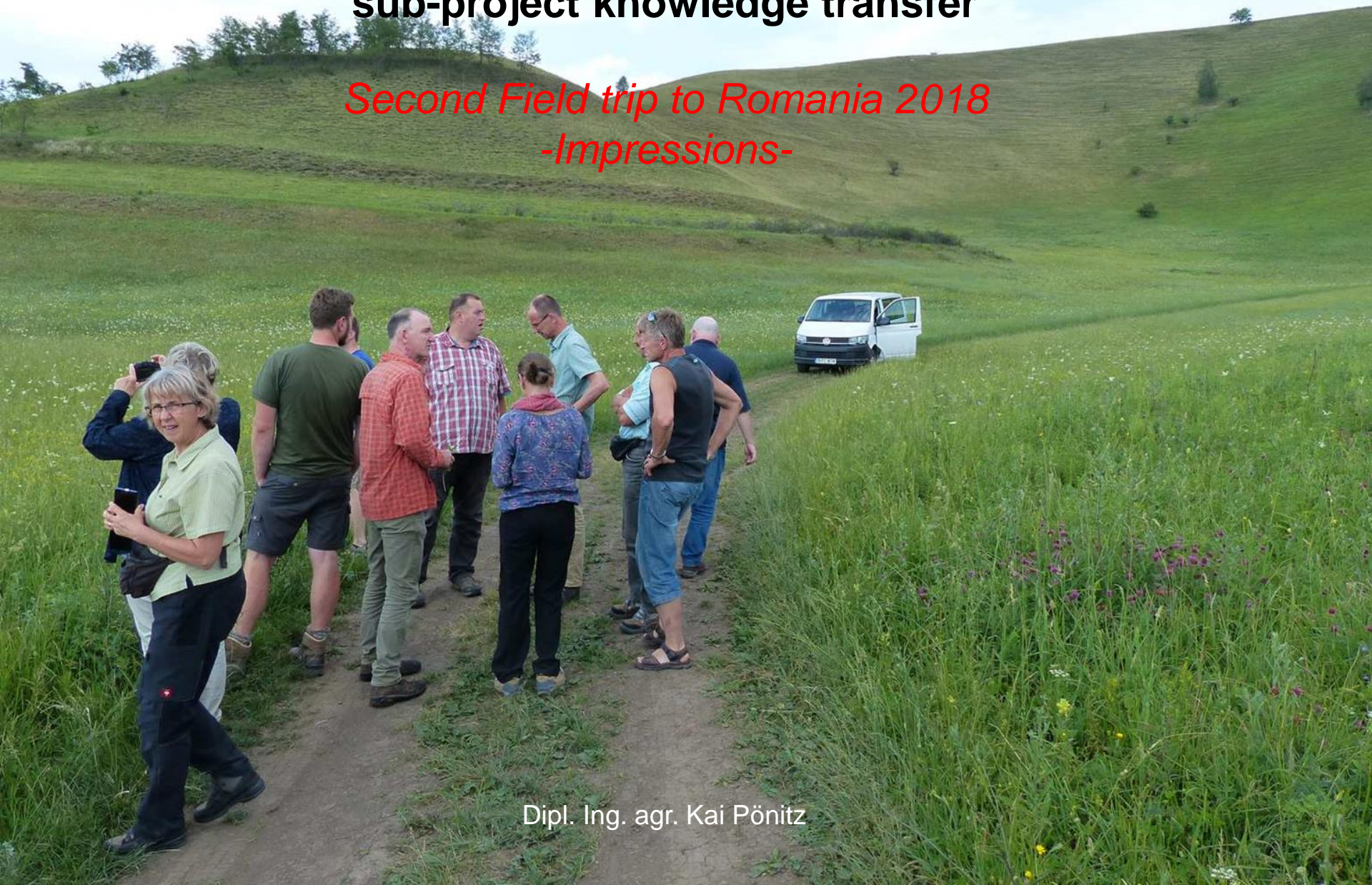


Sustaining agricultural change through ecological engineering and the optimal use of natural resources (STACCATO) – sub-project knowledge transfer

*Second Field trip to Romania 2018
-Impressions-*



Outline

- 1 Background of the project
- 2 Overview of the field trip and results
 - 2.1 What did we do?
 - 2.2 Why did we make the excursion?
 - 2.3 Impressions 2018



1 Background of the project

- Assessment of ecosystem services (ES) in representative landscapes across Europe (Germany, Sweden, Switzerland, Bulgaria, Romania)
- Examination of different indicators that give an explanation about ES and help to evaluate their benefits
- Study focuses on local land use intensity, biodiversity and the potential impacts of future land use and climate change on ES
- Aims at advancing long-term sustainable development of land use systems

2 Overview of the field trip and results

2.1 What did we do?

- Participants were guided to several regions of the project area (Transylvania) over the course of four days
- One-day excursions
- Expert information on soil, vegetation, biodiversity and agricultural history
- The group visited three traditional Romanian farms and had a guided tour through an Evangelical-Lutheran church in Biertan
- Animated discussions and reflections with farmers and within the group

Field trip to Romania within the scope of the STACCATO-project 2018

- Thursday, 2018-05-31: Arrival; Cluj-Napocca, Colțești
- 11:00 a.m. departure from Dresden International Airport
 - 18:05 p.m. arrival at Cluj International Airport
 - Journey to Rimetea, hotel check-in
 - Dinner
 - **Introduction to the topic: excursion area; multifunctionality of agriculture and cultural landscape**

- Friday, 2018-06-01: Colțești, Rimetea, Petresti de Jos
- **Field trip to Colțești with focus on peasant farming, soil conditions, crop diversity; field trip to Rimetea attended by Prof. Rakosy (Babes-Bolyai University Cluj) with focus on flora & fauna on permanent grassland, Night catch of moths with light trap**
 - Dinner
 - Reflection & discussion: land use change in Romania compared to Saxony

- Saturday, 2018-06-02: Petresti de Jos, Liteni, Turda,
- **Field trip to Liteni with focus on extensive agriculture and biodiversity of crop weeds**
 - **Land use transect and Plant identification exercise**
 - **Journey to the Turda region with focus on soil („intensively managed chernozem on large acreages“)**
 - Discussion: the importance and functions of structural elements in the cultural landscape
 - Dinner with reflection of the day

- Sunday, 2018-06-03: Richiș
- Hotel check-out
 - **Field trip to Muntele Rece with focus on extensive grasslands and biodiversity in the uplands affected by acidic bedrock**
 - Journey to Richiș (Mediaș region)
 - Visit of World Cultural Heritage fortress church Birthälm
 - Check-in at the rectory of Richiș
 - Visit of a vineyard and dinner with wine tasting

- Monday, 2018-06-04: Richiș
- **Feld trip to the Transylvanian-Saxon cultural landscape with focus on landscape elements, landscape changes caused by land use change and abandonment, importance of special locations for biodiversity**
 - **Dinner with Willy Schuster in Mosna, European chairman of the peasant farmer organisation „La Via Campesina“**
 - Final discussion: „Opportunities and limits of the current European agricultural policy for the sustainable development of rural areas - proposals for the next funding period “

- Tuesday, 2018-06-05: Return
- 12:15 p.m. Departure from Sibiu
 - 15:45 p.m. Arrival in Dresden

CONTACT:
Dipl. Ing. agr. Kai Pönitz
☎ 0172 - 301 31 20



2 Course of the field trip and results

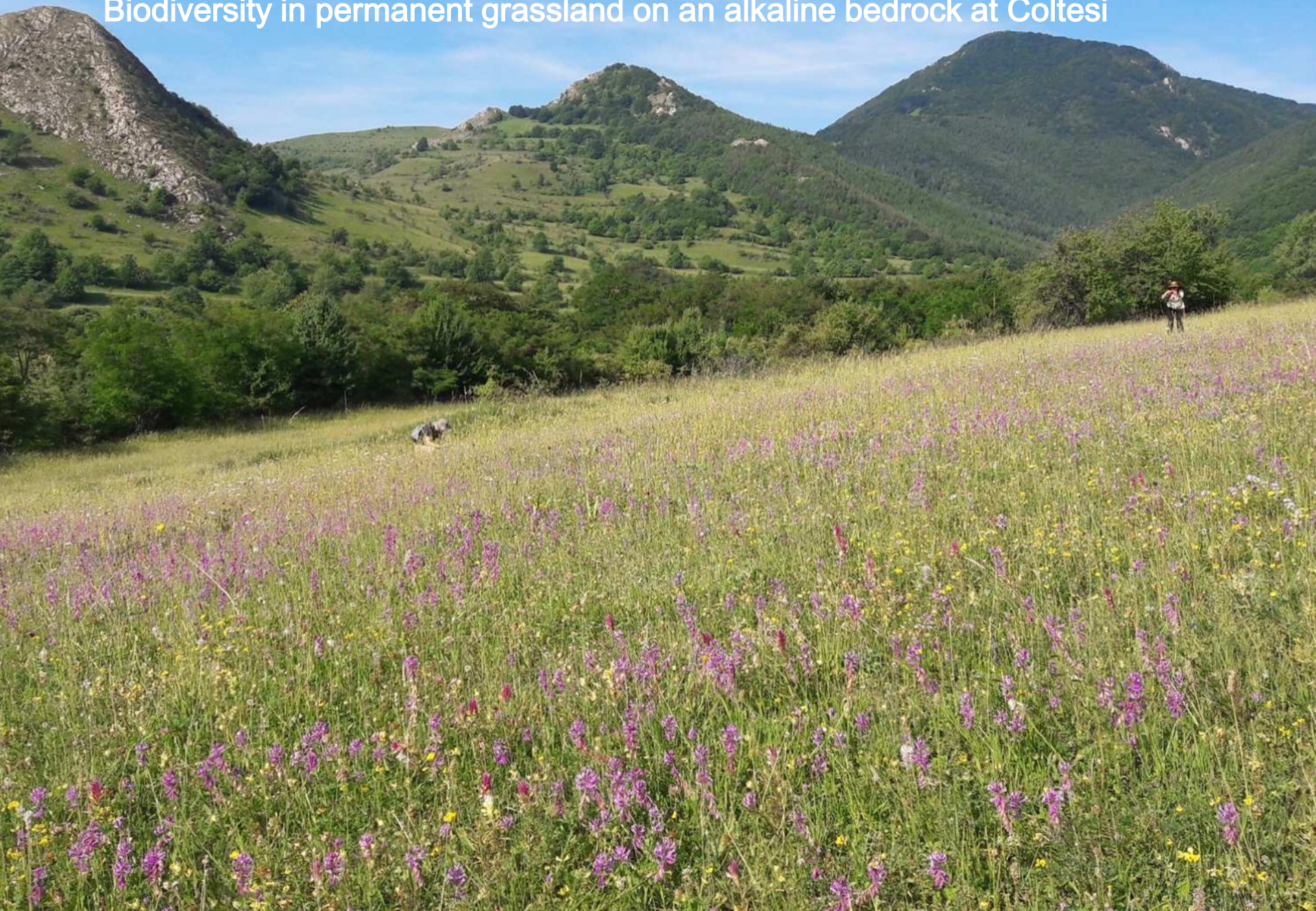
2.2 Why did we make the excursion?

Knowledge transfer within the scope of the project aims at:

- Demonstrating agricultural multifunctionality using the example of cultural landscapes with high biodiversity (Romania compared to Saxony)
- Explaining the importance and functions of structural elements in these landscapes
- Raising awareness for biodiversity and its importance for ecological engineering and sustainable land use
- Showing the effects of different farming systems on local biodiversity
- Reflection of the own farming methods and their effects on biodiversity (e. g. area output, mower with conditioner, use of mulcher)
- Highlighting the importance of ecosystem services in the discussion about the future drafting of the European agricultural policy

2.3 Impressions 2018

Biodiversity in permanent grassland on an alkaline bedrock at Coltesi



2.3 Impressions 2018

Determination exercise on biodiversity in permanent grassland near Petresti de Jos



2.3 Impressions 2018

Extensive discussions on the relationship between agricultural use and Biodiversity on permanent grassland over acidic bedrock at Muntele Rece



2.3 Impressions 2018

Joint visit with Prof. Rakosy to farmer Alpar Mihacs and his family



2.3 Impressions 2018

Excursion on the biodiversity of day butterflies with Prof. Rakosy in Rimetea



2.3 Impressions 2018

Catching months with Prof. Rakosy in Petresti de Jos



2.3 Impressions 2018

Landuse transect between Petresti de Jos and Lara



2.3 Impressions 2018

Variety of segetal flora with *Adonis Aestivalis*, *Consolida Regalis*, *Bifora Radians* and *Conringia Orientalis* at lara





Thank you for your attention!